



# Warning: Whirling Disease

*Whirling disease is caused by a microscopic parasite that infects trout and mountain whitefish.*

**Prevent the spread! The disease can be spread through the movement of fish, water, sediments or equipment such as felt-soled waders or watercraft.**

**CLEAN:** Rinse all mud and debris from equipment and aquatic gear with clean water.

**DRAIN:** Drain water before leaving the river or lake.

**DRY:** Dry boats and gear between trips.

**CLEAN • DRAIN • DRY  
YOUR BOAT**

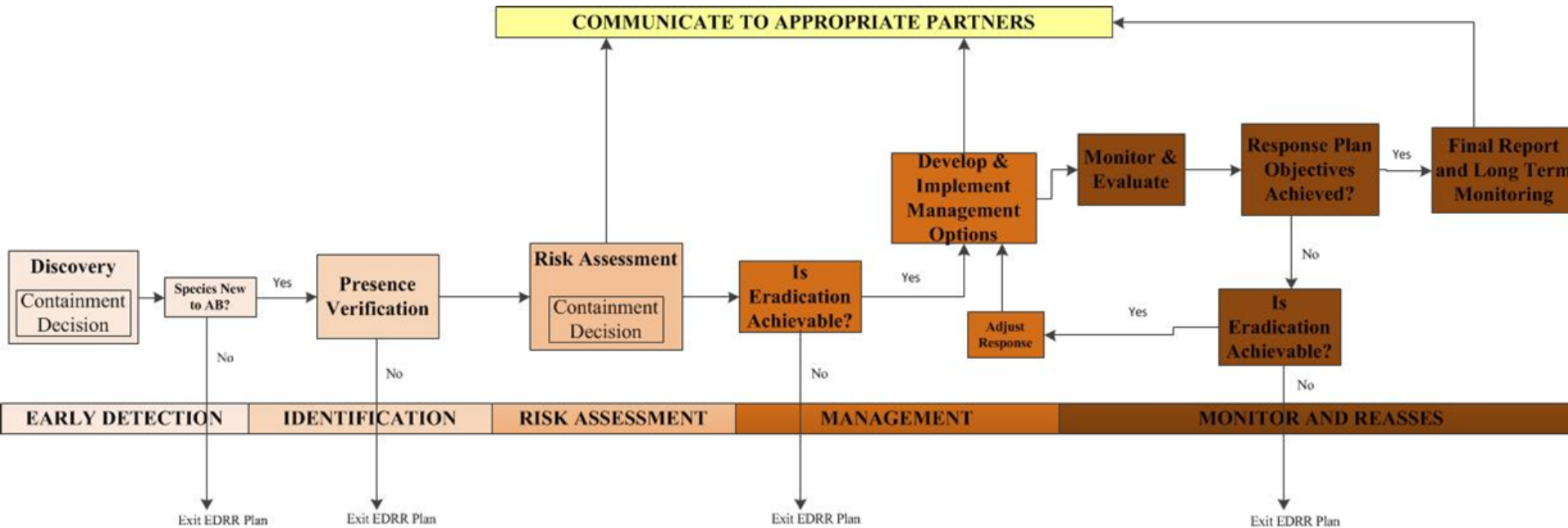
**Alberta**  
Government



For additional information visit [aep.alberta.ca](http://aep.alberta.ca)

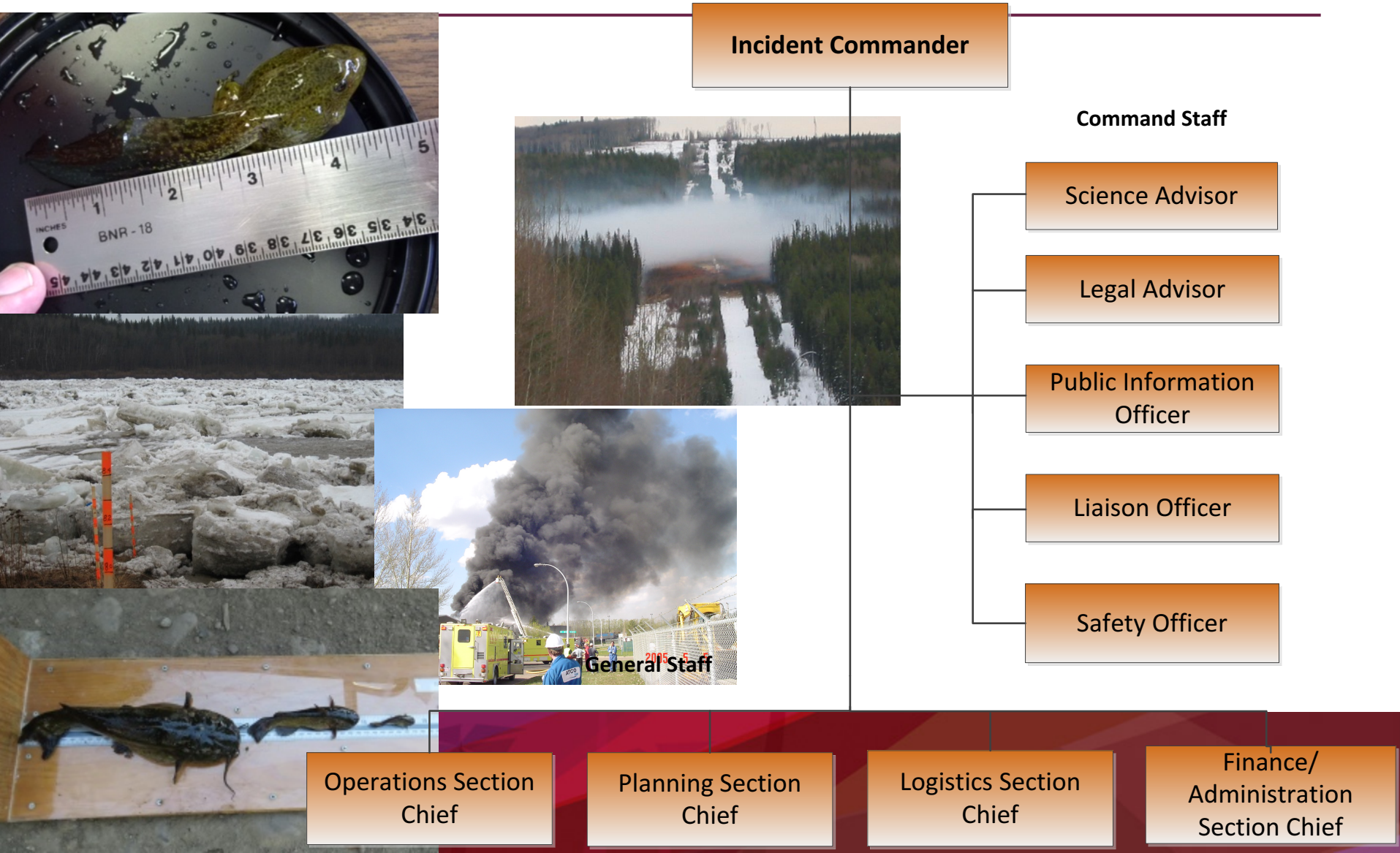
**Alberta**

# Early Detection, Rapid Response (EDRR) Plan for AIS Utilized in WD Response





# Incident Command Structure For Emergency Response





# WD Con't

---

- **Current status:**
  - **Known positive samples :13 locations Banff, 4 private aquaculture, 15 wild Bow River**
  - **Quarantine on all positive facilities**
  - **Lab analysis is complex and requires use of multiple labs. If 'suspect' comes back then other half of head must go to federal lab for confirmation**
  - **Large backlog of samples, won't have full picture until January or so**
- **Will lead to mandatory decontamination protocol for all field staff**
- **Signalled strong support from government on introductions and environmental emergency situations**

# Lake Winnipeg, MB



# Monitoring

- **Limitations:**
  - **Mussels**
  - **Doesn't prioritize high risk waters**
  - **Only 3 sites per waterbody 3 x season**
- **Proposed:**
  - **Expand / more frequent prioritize**
  - **Multi-taxa approach**





# New Law : Pull the Plug CBSA / Specified Penalties

PULL  
the  
PLUG



TO REPORT INVASIVE SPECIES, CALL:  
**1-855-336-BOAT (2628)**

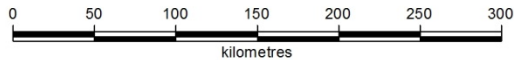
# Inspections: 19,003

- **17 interceptions**
  - 13 from east
  - 4 from south
- **8 were in late fall**
- **8 B.C. bound**
- **SMRID “enhance gov’t program”**
- **secret boater**



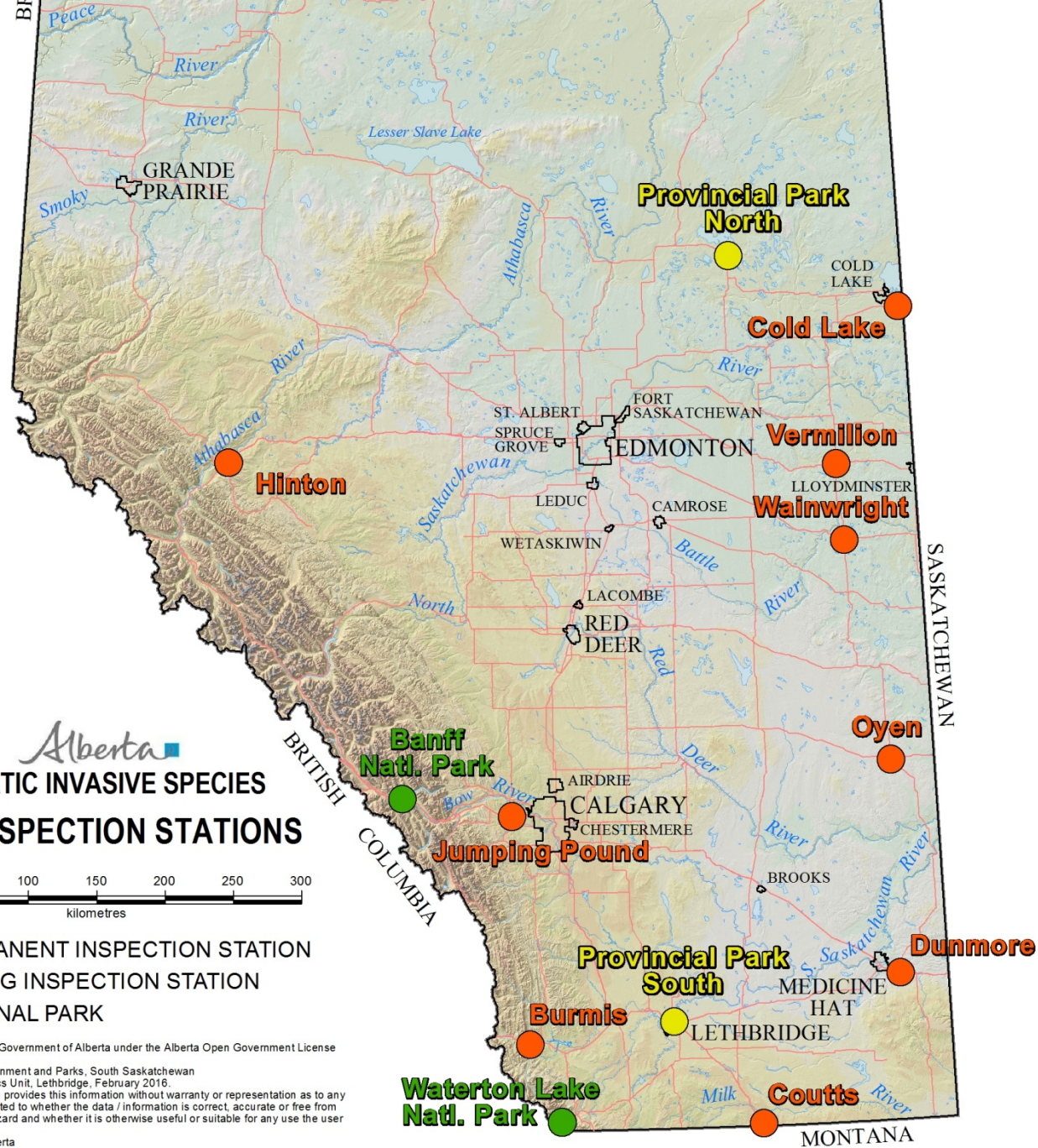


Alberta  
**AQUATIC INVASIVE SPECIES  
 2016 INSPECTION STATIONS**



- PERMANENT INSPECTION STATION
- ROVING INSPECTION STATION
- NATIONAL PARK

Base Data provided by the Government of Alberta under the Alberta Open Government License of November 2014.  
 Produced by Alberta Environment and Parks, South Saskatchewan Region, Regional Informatics Unit, Lethbridge, February 2016.  
 The Minister and the Crown provides this information without warranty or representation as to any matter including but not limited to whether the data / information is correct, accurate or free from error, defect, danger, or hazard and whether it is otherwise useful or suitable for any use the user may make of it.  
 © 2016 Government of Alberta



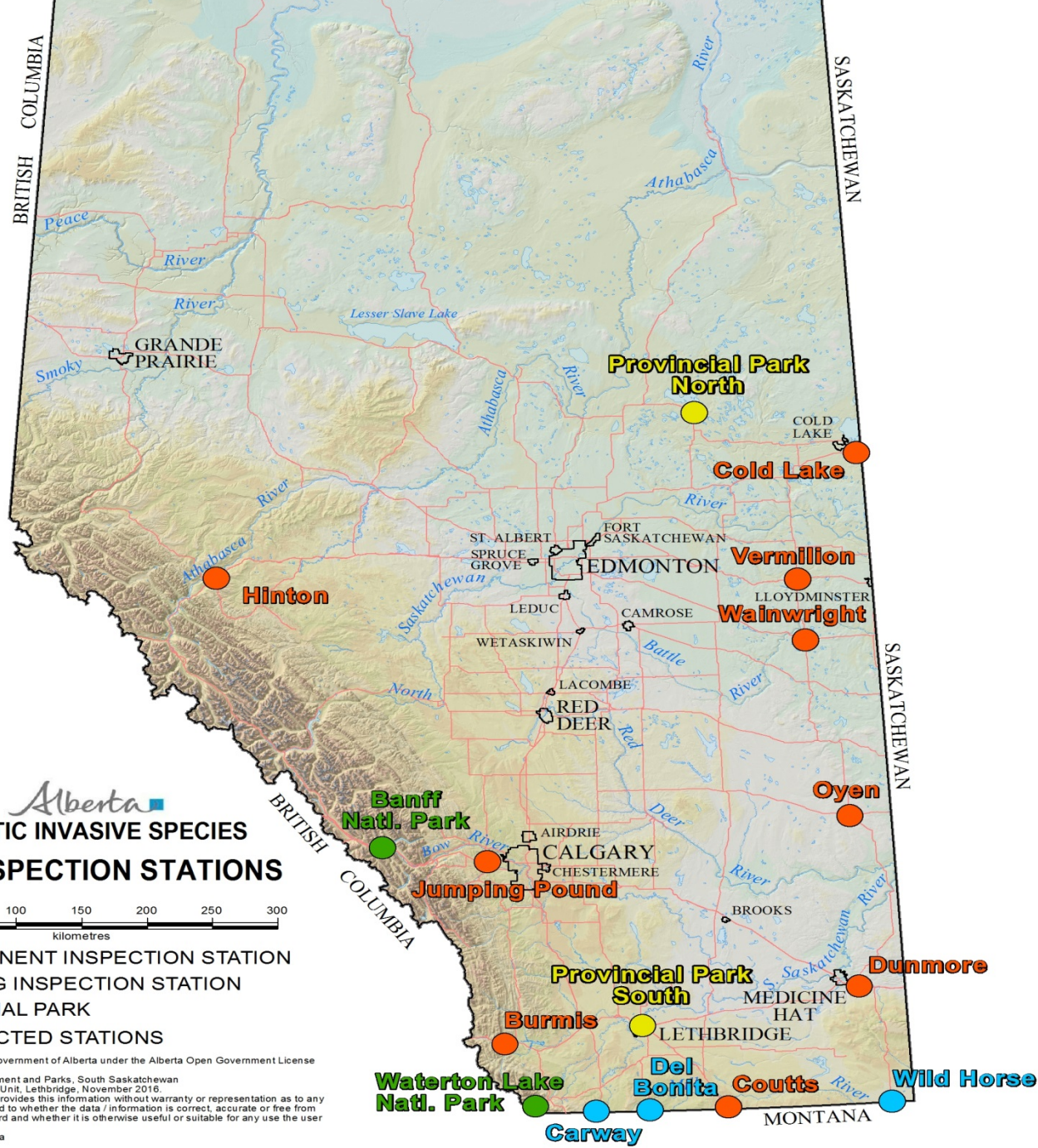


Alberta  
**AQUATIC INVASIVE SPECIES  
 2017 INSPECTION STATIONS**



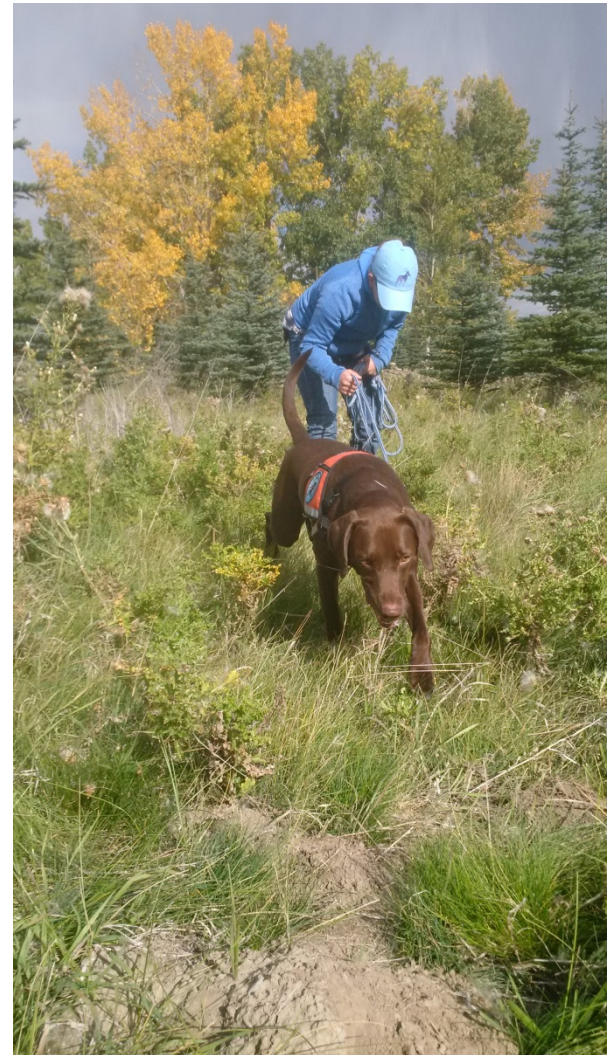
- PERMANENT INSPECTION STATION
- ROVING INSPECTION STATION
- NATIONAL PARK
- PROJECTED STATIONS

Base Data provided by the Government of Alberta under the Alberta Open Government License of November 2014.  
 Produced by Alberta Environment and Parks, South Saskatchewan Region, Regional Informatics Unit, Lethbridge, November 2016.  
 The Minister and the Crown provides this information without warranty or representation as to any matter including but not limited to whether the data / information is correct, accurate or free from error, defect, danger, or hazard and whether it is otherwise useful or suitable for any use the user may make of it.  
 © 2016 Government of Alberta





# K-9s





Alberta





# Thank You

---

