

IDAHO



**STATE DEPARTMENT
OF AGRICULTURE**



Idaho Snake River Update

ISDA's Rapid Response Plan

Notify impacted entities.

Implement containment measures.

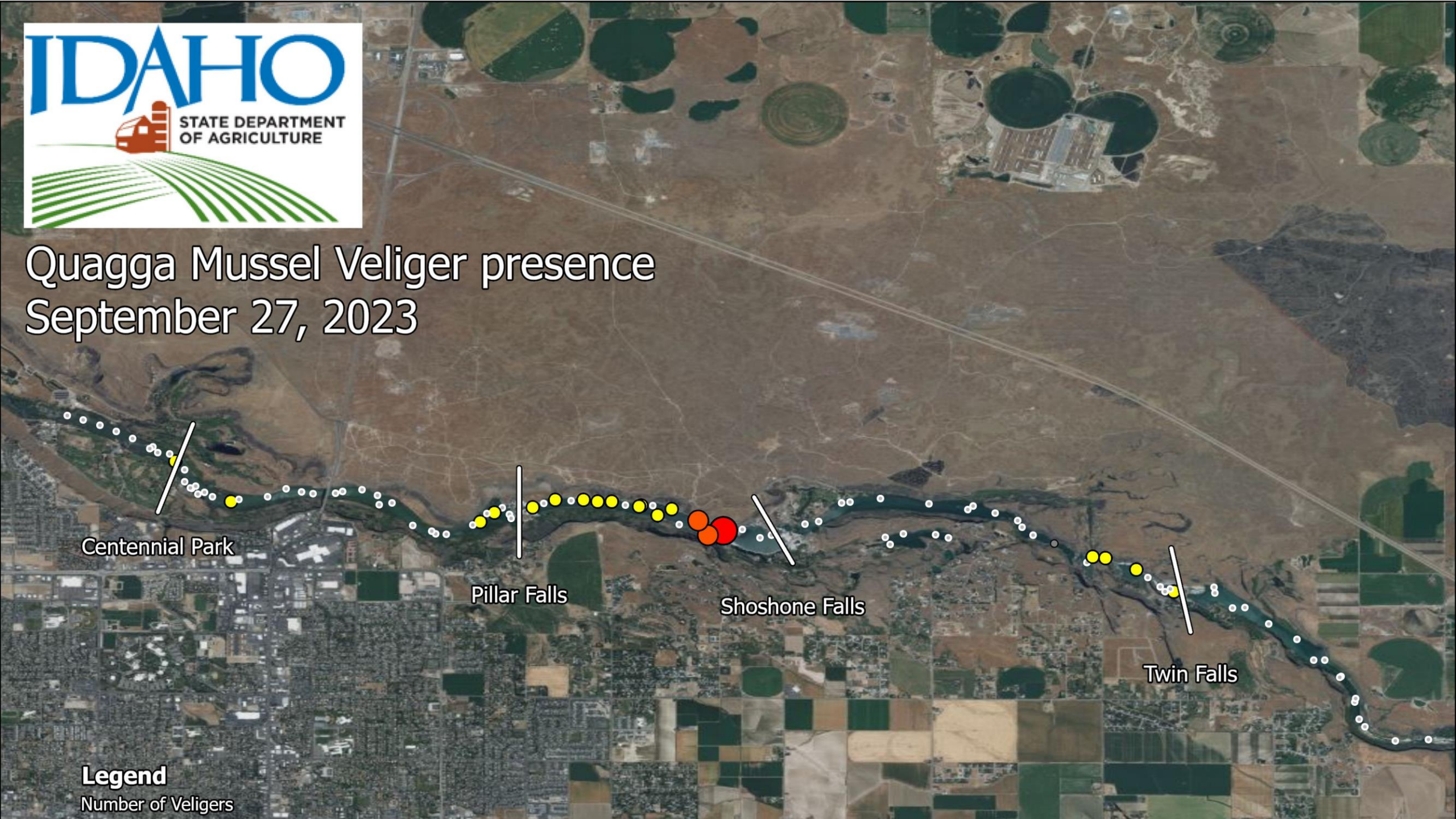
Conduct delimiting surveys.

Explore treatment options.





Quagga Mussel Veliger presence September 27, 2023



Centennial Park

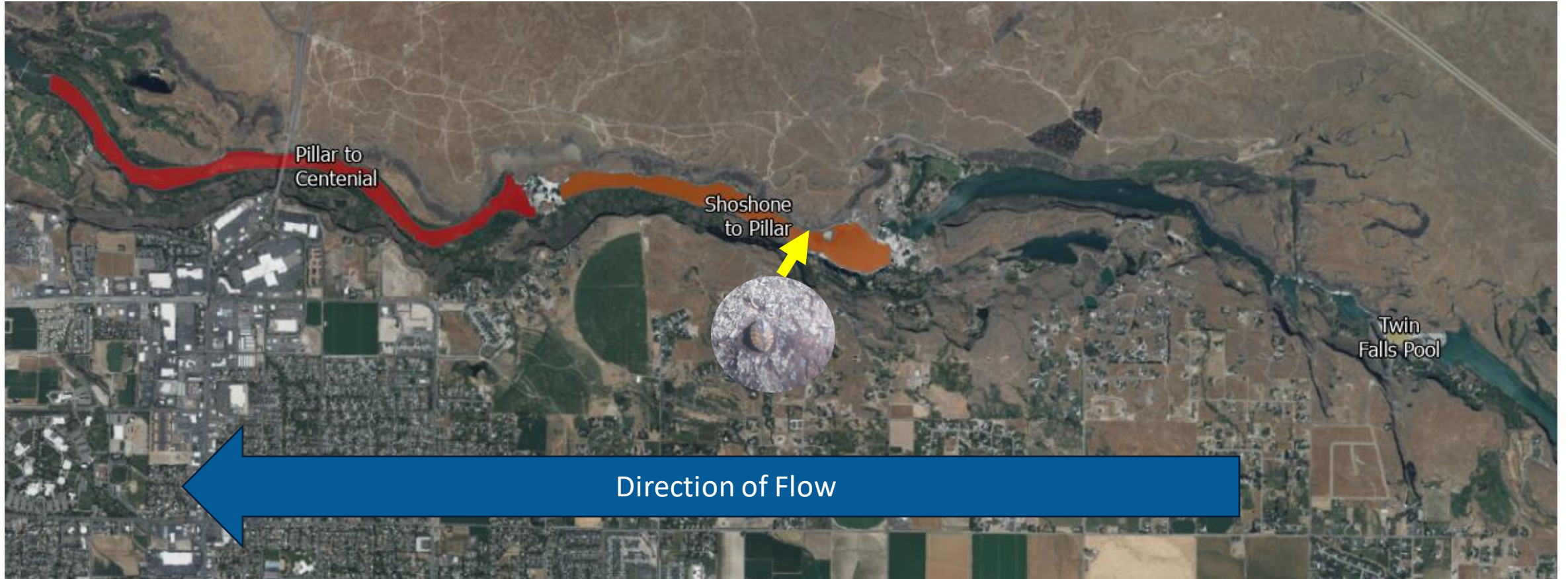
Pillar Falls

Shoshone Falls

Twin Falls

Legend

Number of Veligers



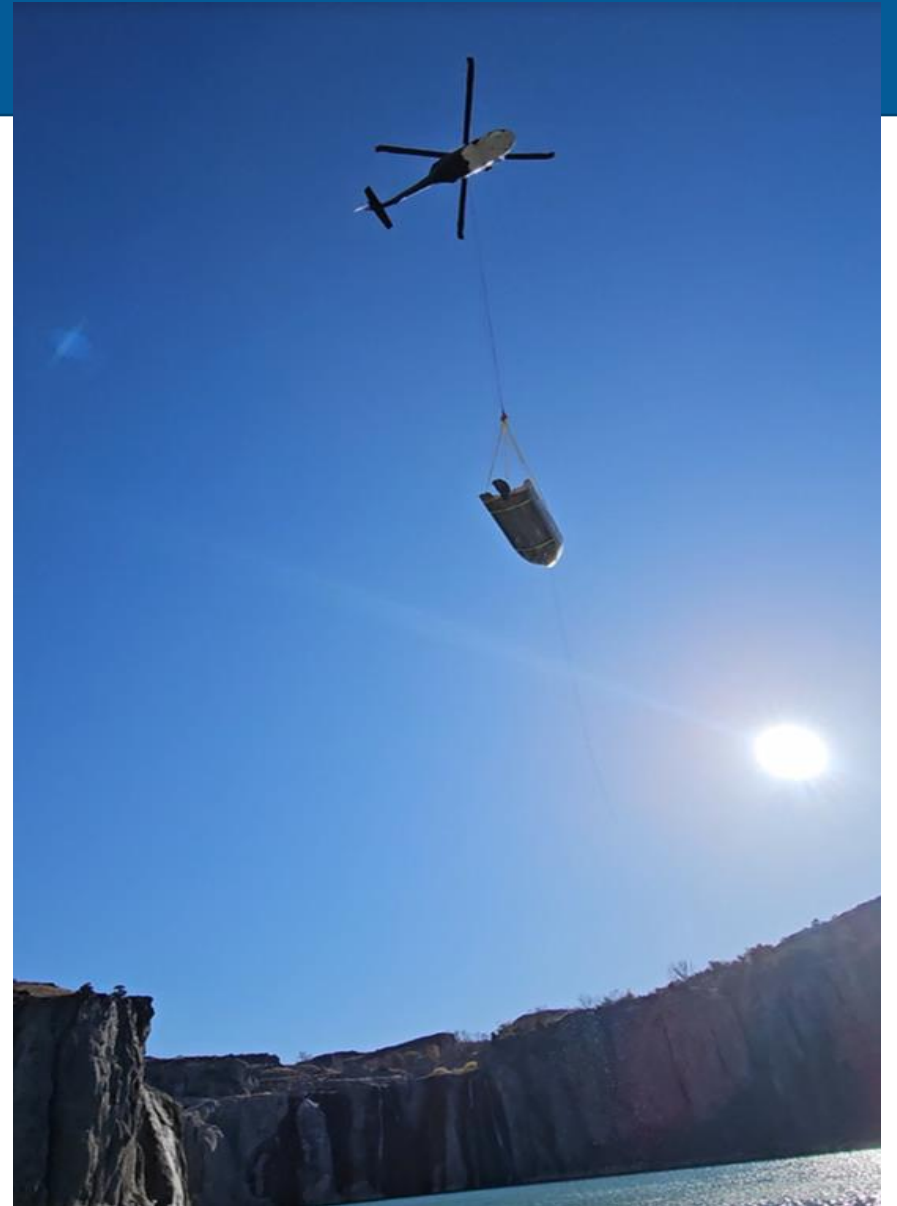
Treatment

- October 3 – 13, 2023
- 192 total hours of treatment
- 46,475 gallons of Natrix[®] applied
- 1 PPM maintained within tolerances for full duration of treatment
- Copper fully out of the system by October 18, 2023



Demobilize Equipment

- Triple rinse all containers and application equipment
- Decontaminate all watercraft or water related equipment
- All equipment removed by November 8th



2024 Legislative Session- Policy Work

- Program shift to prevention/containment state
- Senate Bill 1372- ISDA Appropriations
 - \$6.5 M to Invasive Species Program (\$5M transfer to IS Sticker Fund)
 - 2 FTE for Invasive Species Staff
- Senate Bill 1322- Idaho Invasive Species Act
 - “Pull the Plug”
 - Local boat inspection stations- Invasive Species Fund
- IDAPA 06.06.09 135 Snake River Quarantine- Mandatory inspection and decontamination for the Mid-Snake
 - Centennial Park (Closure lifted, decon open when park is open)
 - Shoshone Falls (Closure in effect, decon site when closure is lifted)

Mandatory Decontamination

- River access allowed during park hours of operation
 - Decontamination open when park is open
- Increased staffing for multiple crews
- Multiple lanes depending on traffic
- Multiple decontamination units operational and spare unit
- Increased signage on river corridor
- Law Enforcement Support through Twin Falls County and IDFG
- Passport system and data collection
- Long term site improvements

2024 Early Detection Monitoring

Double Monitoring Efforts Statewide

Veliger Monitoring (microscopy)

- ~ 3,000 plankton samples collected from 80 waterbodies)
 - Multiple sample events, bi-weekly, per waterbody
 - Priority overnight shipment
 - 2 week turnaround for lab analysis

Adult Monitoring (visual)

- ~ 3,000 surveys conducted
- SCUBA, Reservoir drawdown, substrate and benthic grab sampling

Exploring other monitoring methods

- eDNA

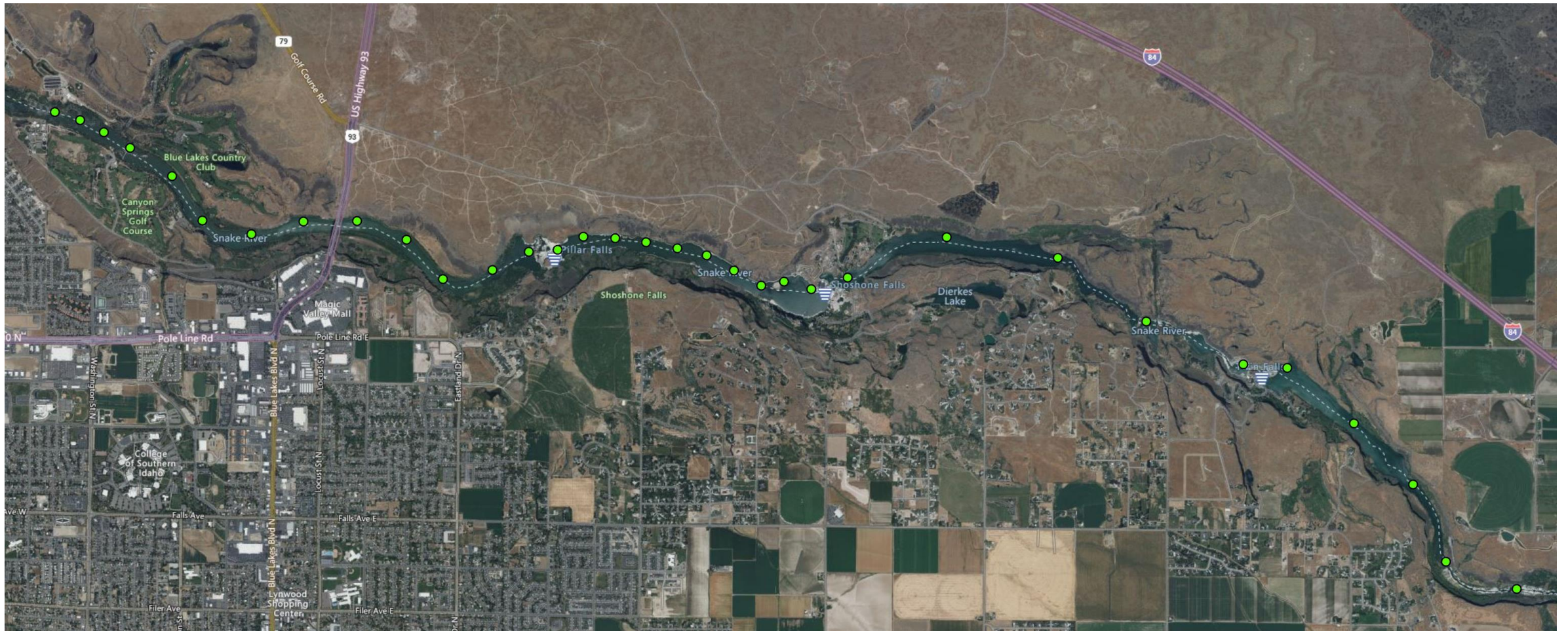


Idaho Waterways Survey

A Standard Operating Procedure for Aquatic Plants & Invasive Species



Mid-Snake Veliger Sampling- Established Delimit



Education Campaign- Clean Drain Dry

- Revamp Website
- Revamp entire Clean, Drain, Dry campaign
 - Video
 - Radio
 - Social Media
 - Digital Display
 - Promotional Items
 - Outdoor Display
 - Billboard
 - Marina
 - Gas stations

