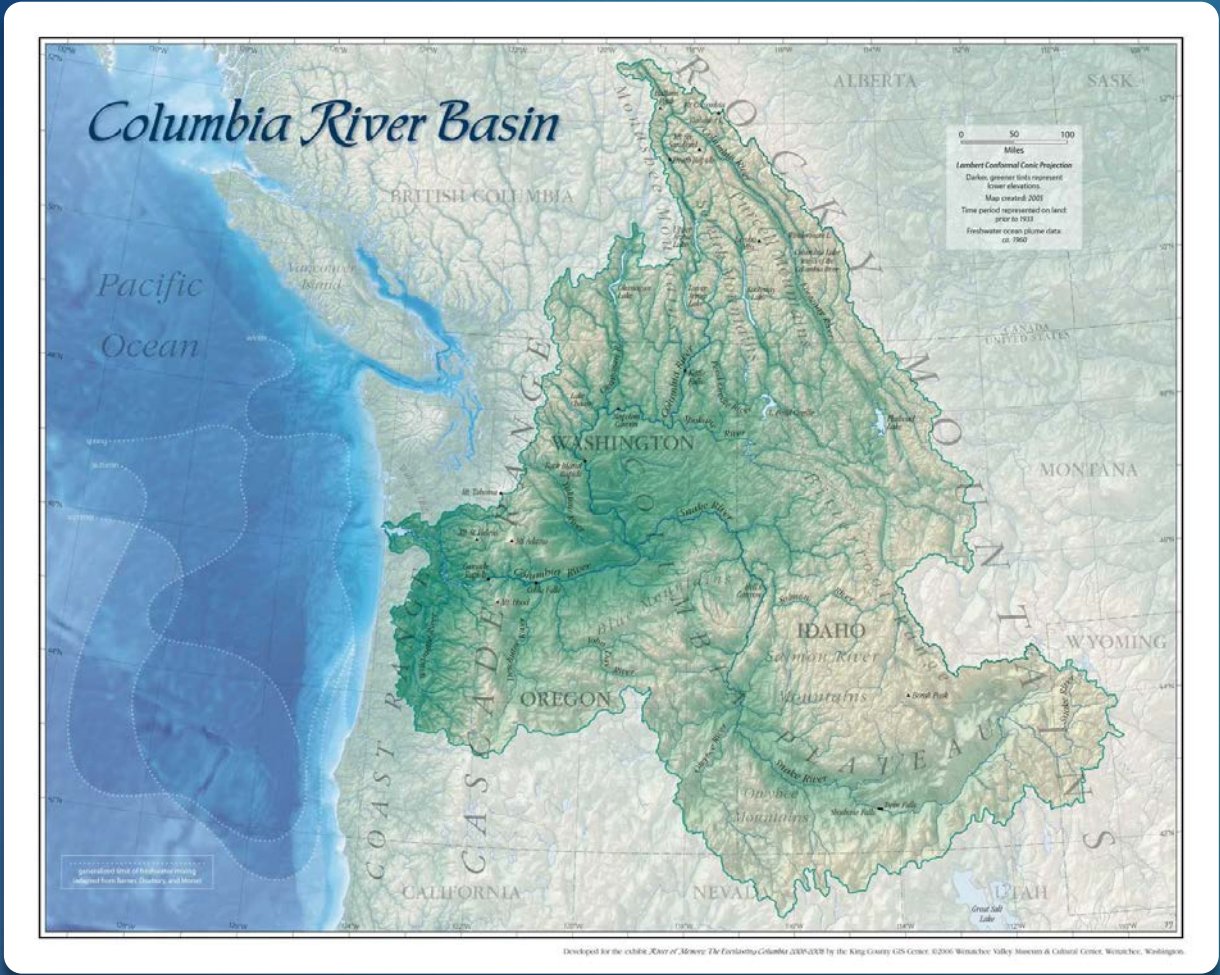


JANUARY 2019
TIM COUNIHAN AND
ROBYN DRAHEIM

Columbia River Basin Dreissenid Monitoring Forum

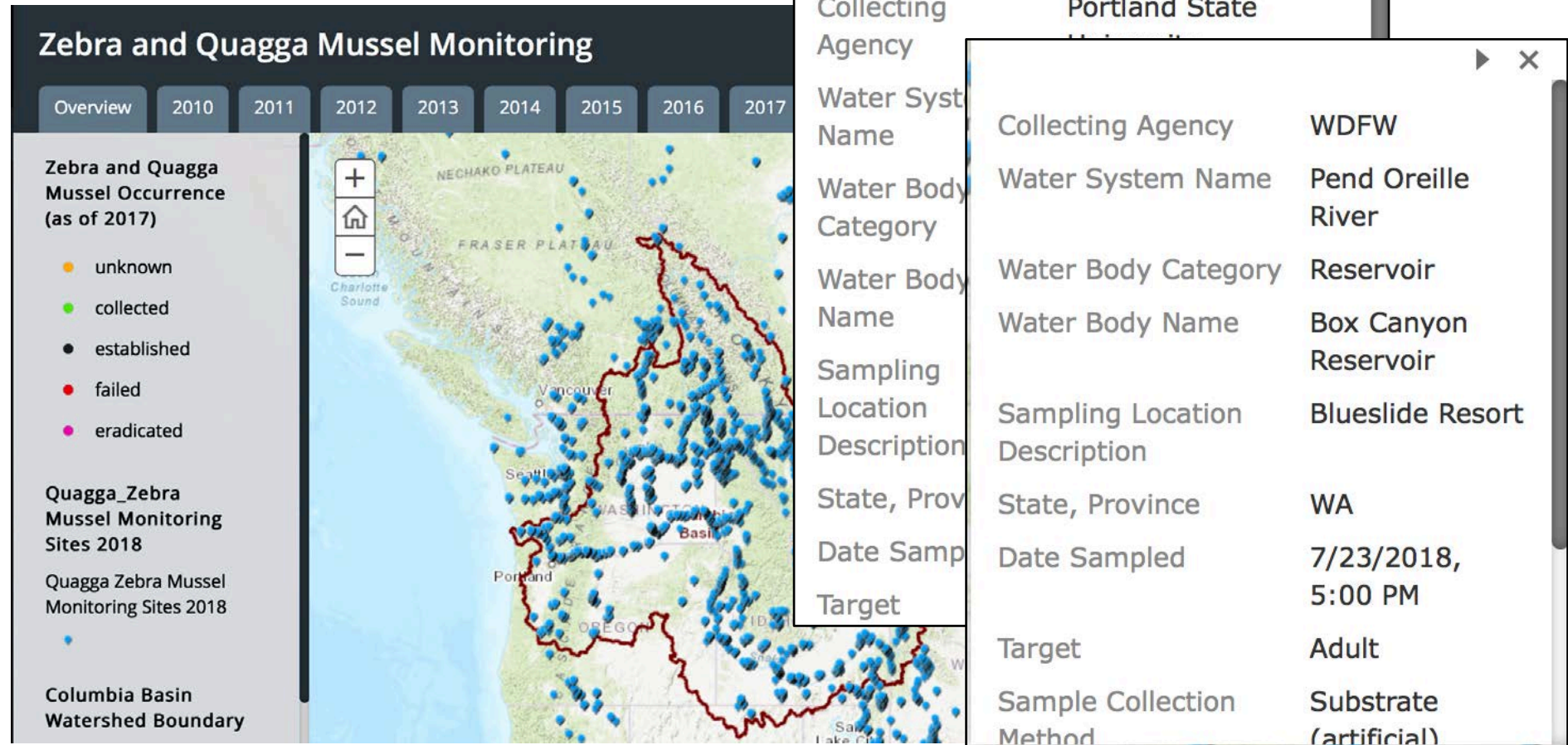
Agenda

- ▶ Introductions
- ▶ Monitoring updates
2019 results and 2020 plans
- ▶ 2019 Monitoring Map
- ▶ Regional risk assessment model:
 - ▶ Incorporating monetary/non-monetary valuation of natural resources
- ▶ Wrap Up
- ▶ Next Steps



Monitoring Updates: 2019 Results and 2020 Plans

Regional Mapping

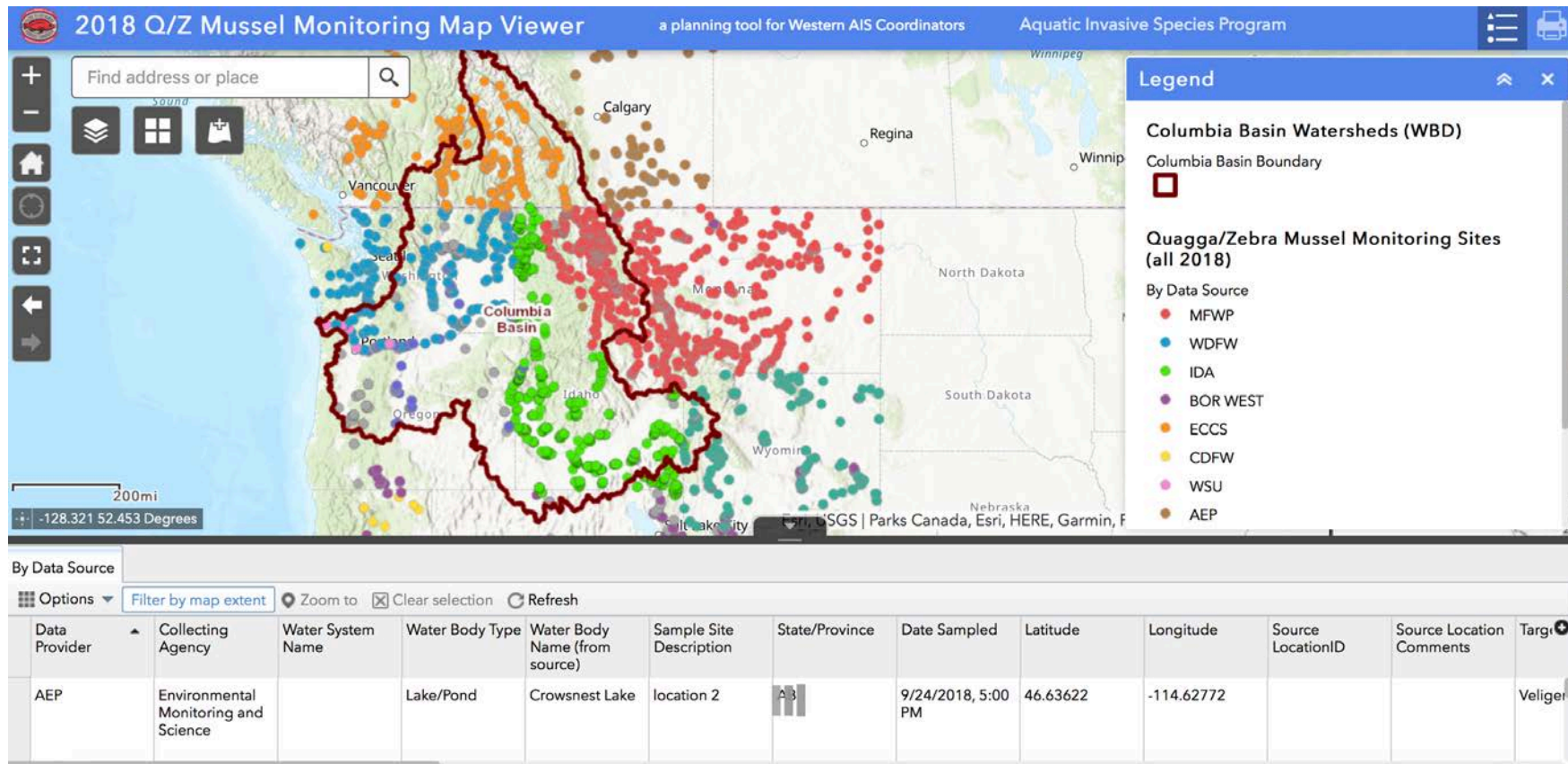


2018: Changes to Data Call

- ▶ Validation of Location Data
 - ▶ Assign unique spatial references (identifiers) to each water body
 - ▶ Strive to provide coordinates with the highest confidence
 - ▶ Cross reference location data to validate accuracy (ex: in case of transposition errors in recording lat/longs)
 - ▶ Tied to internal agency names/modifiers
 - ▶ => More advanced data analyses, additional data layers



Monitoring Data as Planning Tool



2019 CRB Monitoring Data Survey



Do states need this information for planning purposes? If so, when?



What is the ideal timing of data request/submission?



Do data requests/formats match up with data collection formats?



What are the biggest barriers and bottlenecks to data submission?



What can we do better?

2019 CRB Monitoring Data Survey – Results

- ▶ Changed the timing of:
 - ▶ Spreadsheet distribution
 - ▶ Data call
 - ▶ Initial mapping
- ▶ Tweaked our spreadsheet categories
- ▶ Evaluated potential other options for reducing burden, addressing QA/QC, etc.

2019 CRB Monitoring Data



Do states need this information for planning purposes? If so, when?



What is the ideal timing of data request/submission?



Do data requests/formats match up with data collection formats?



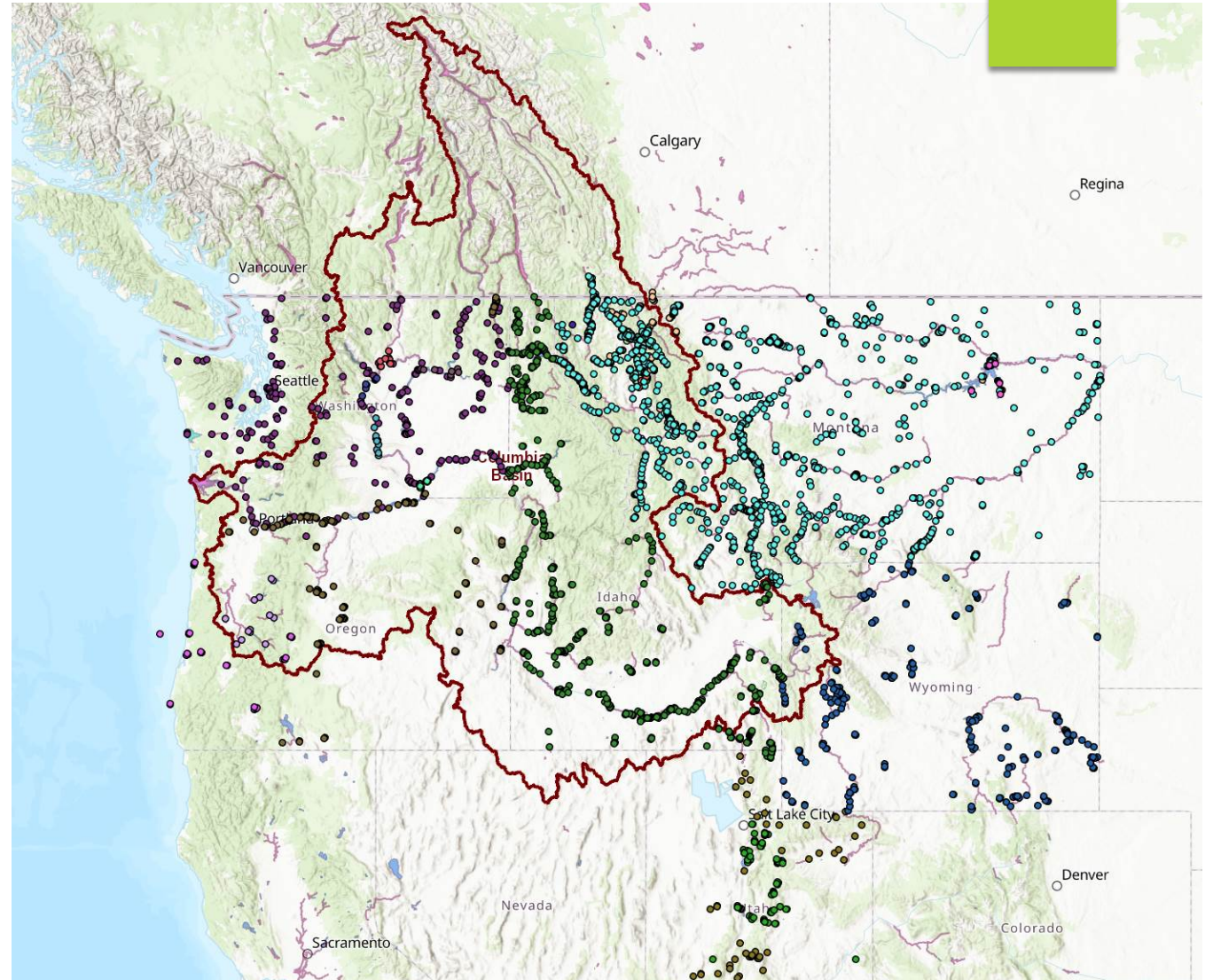
What are the biggest barriers and bottlenecks to data submission?



What can we do better?

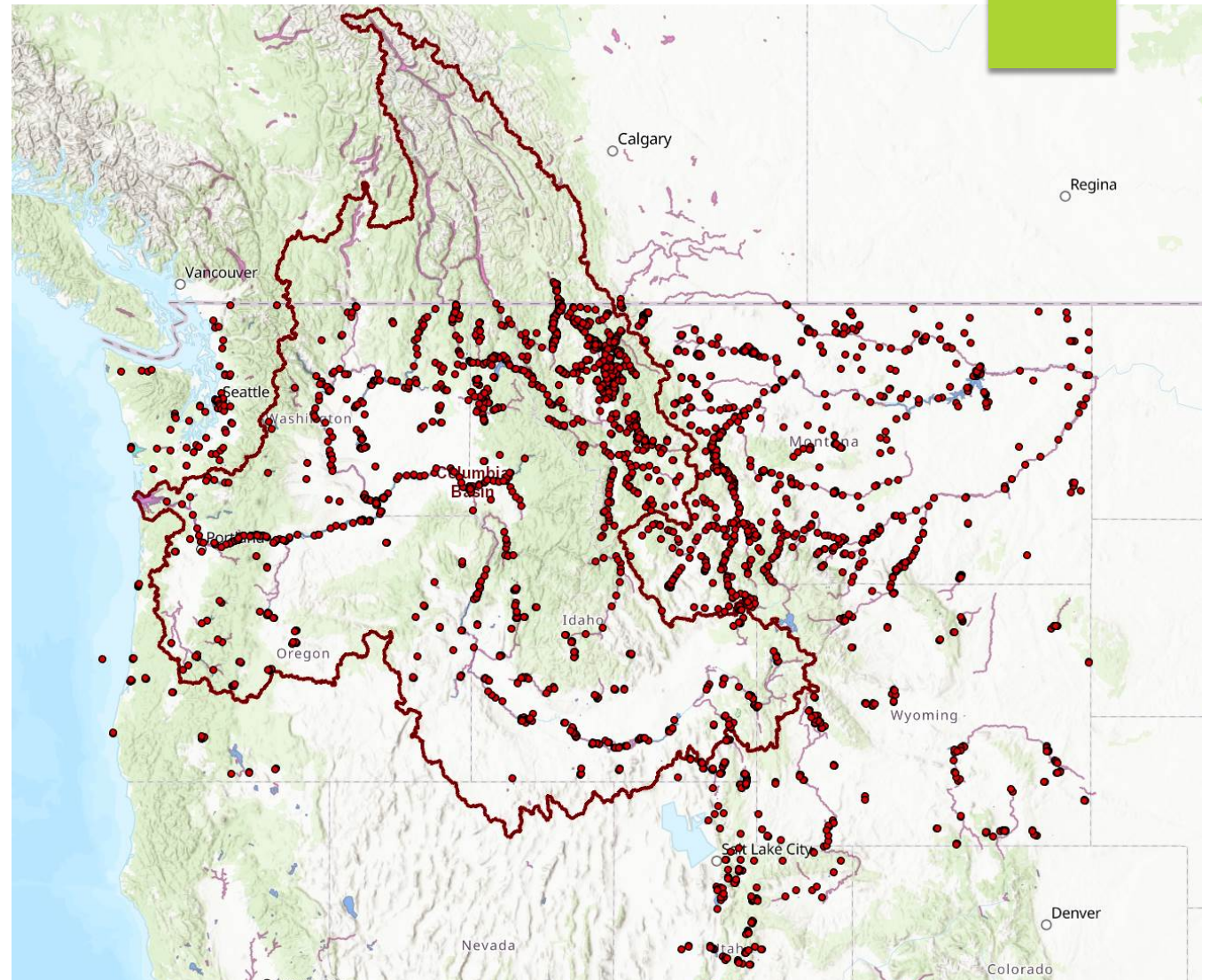
2019: Preliminary Mapping Results

- ▶ All 2019 sampling*



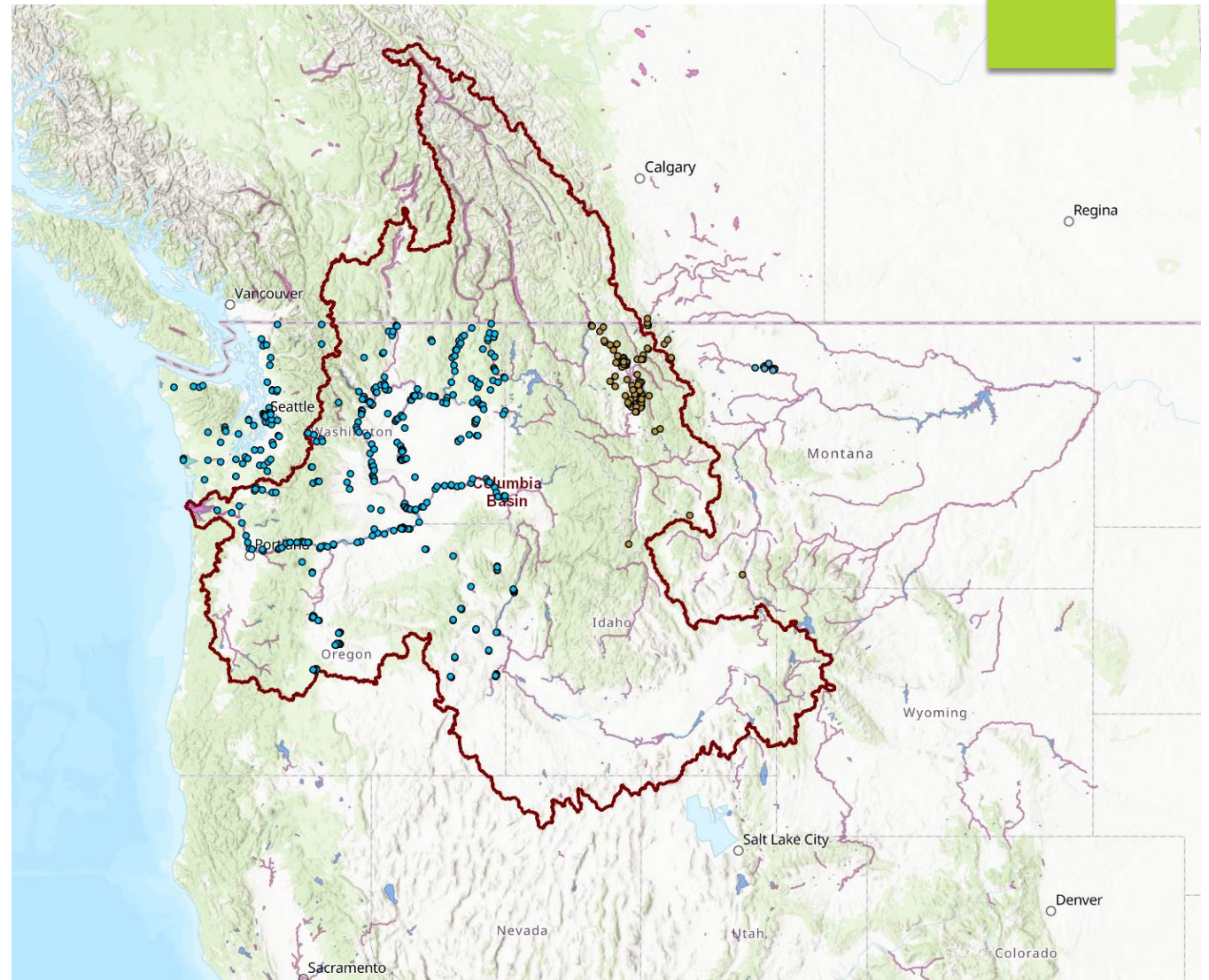
2019: Preliminary Mapping Results

- ▶ All plankton tows



2019: Preliminary Mapping Results

- ▶ All eDNA sampling



2020:
How can we make
the process easier?

2020:

Are we

collecting/mapping

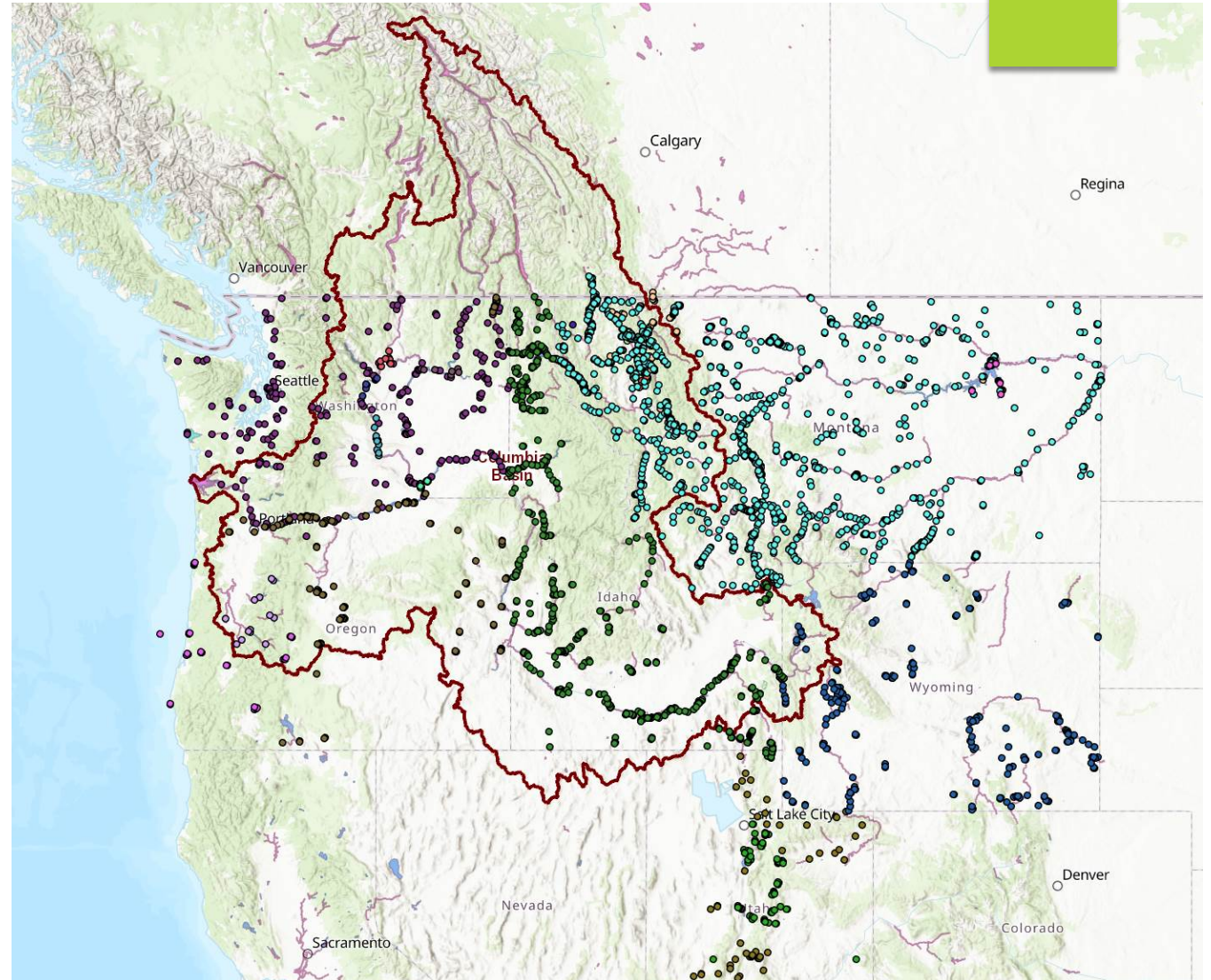
the right data to

answer your


questions?

Preliminary Mapping Questions

- ▶ Comparability ~50 vs ~26,000
- ▶ Data standardization?
- ▶ How do you measure effort?
- ▶ Seasonality?
- ▶ Repeat samples?



Next Columbia
River Basin
Dreissenid
Monitoring
Forum



Incorporating monetary/non-monetary valuation of natural resources into a regional risk assessment model

Next Steps
