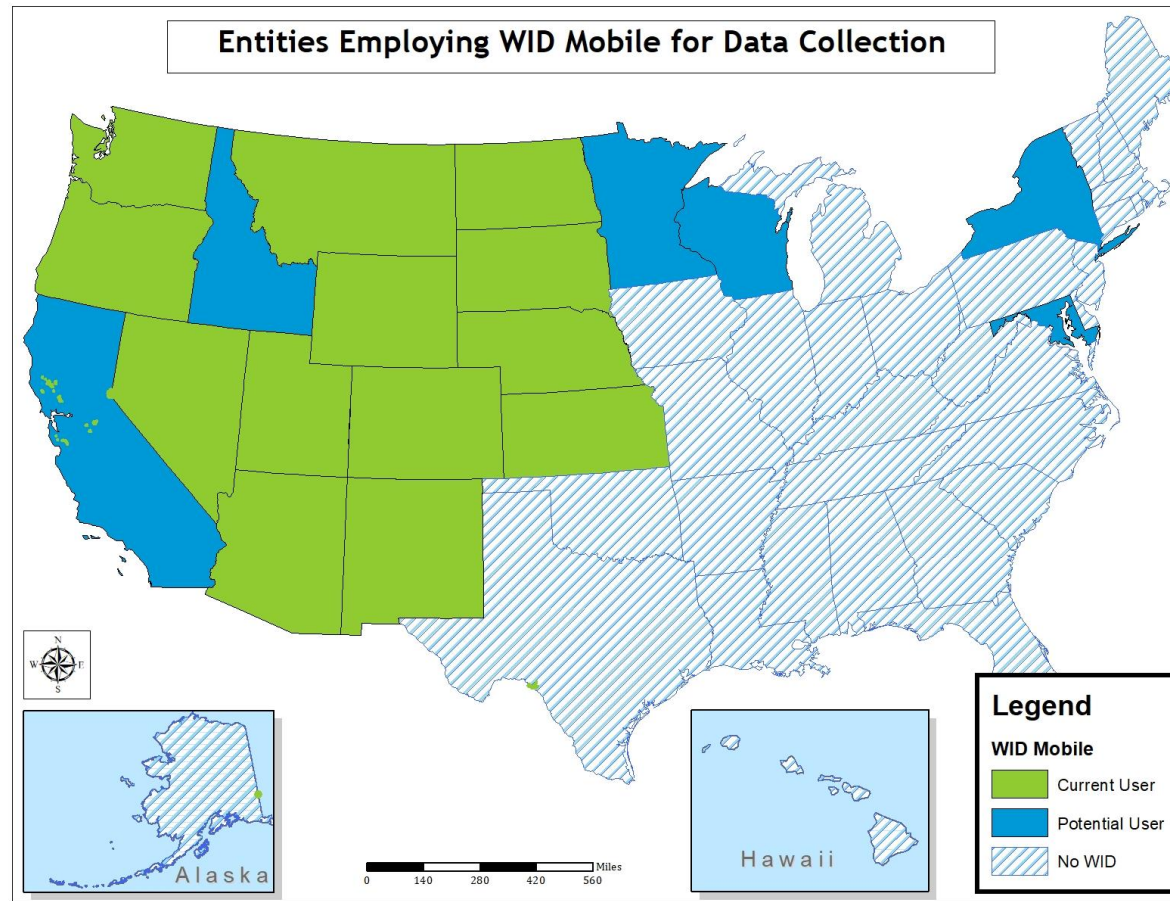


Correlating Regional WID Data to Monitoring Prioritization

Columbia River Basin AIS Team Meeting
June 4, 2024

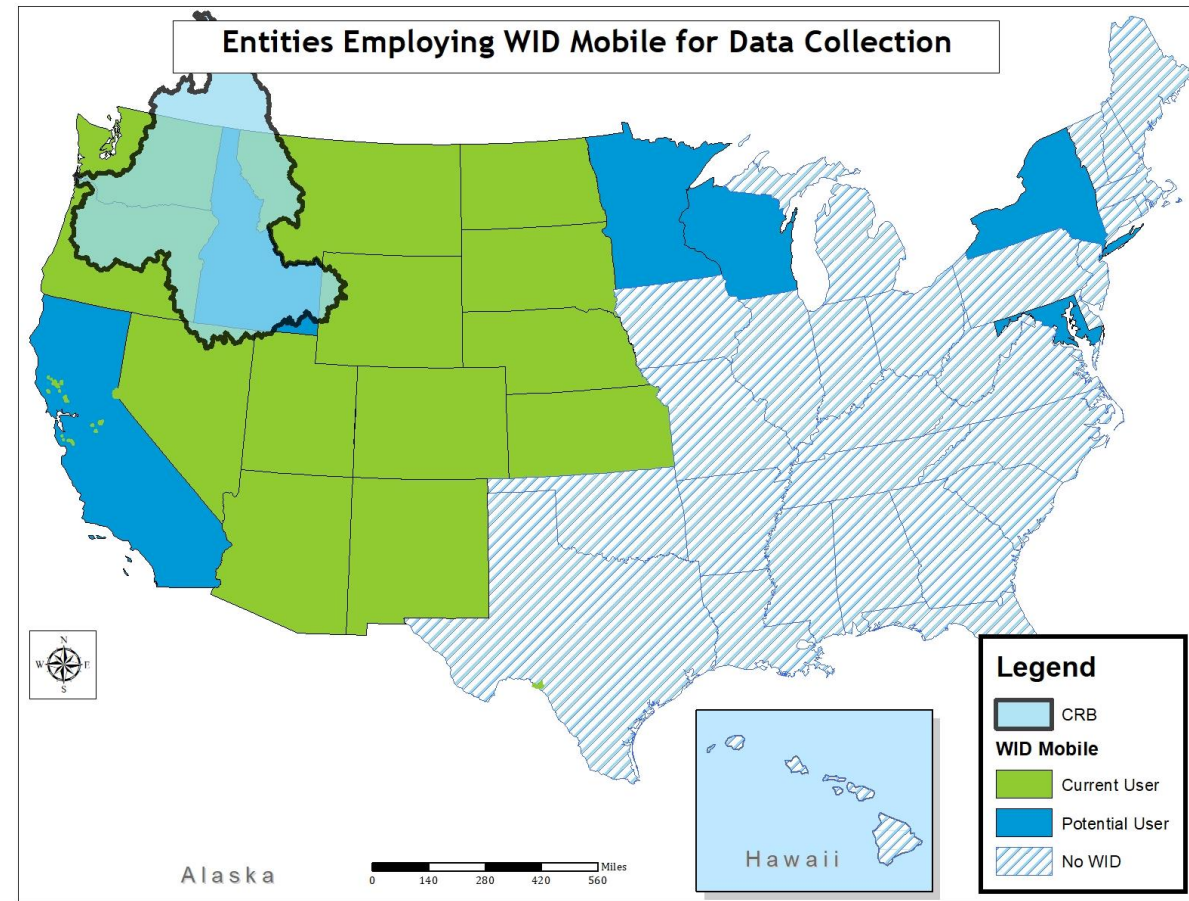


Robert Walters
Invasive Species Program Manager
Colorado Parks & Wildlife
Robert.Walters@state.co.us



The Data.....

- 2022 & 2023 Data From Regional WID Data Sharing System
 - Montana - 194,580 Records
 - Nevada - 34,427 Records
 - Oregon - 1,011 Records
 - Washington - 110,447 Records
 - Wyoming - 119,038 Records
- Primary Data Of Interest
 - Been in Positive Waters
 - Next Destination
 - Last Water Visited



*DISCLAIMER – My knowledge of CRB is limited and limited time invested in QA/QC of Data

Locations With Most Boats Inspected From ZQM Positive Waters

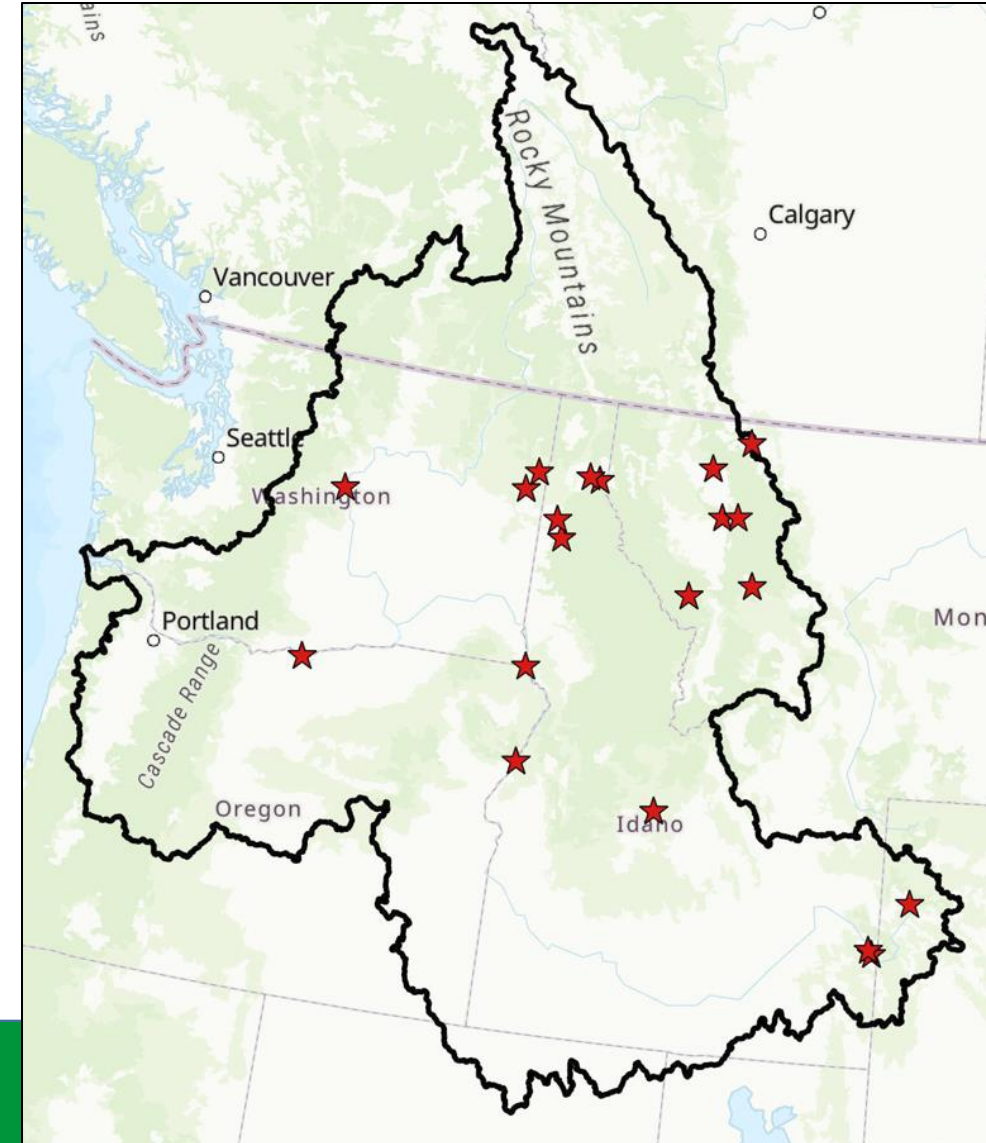
Next Destination	Count
	17,412
Diamond Lake	895
Bear Lake	811
State of Washington	777
Flathead Lake	746
State of Montana	639
State of Idaho	501
Snake River	408
State of Wyoming	401
Columbia River	378

- Many boats are being inspected from positive waters, but a next destination is not being recorded.
- 40% of the top 10 locations are “State Of”.
 - Consider more specificity where possible.



Locations With Most Boats Inspected From ZQM Positive Waters

Next Destination	Count
Diamond Lake	895
Bear Lake	811
Flathead Lake	746
Snake River	408
Columbia River	378
Palisades Reservoir	234
Glacier National Park	153
Clark Fork River	120
Jackson Lake	91
Lake Pend Oreille	90
Coeur d'Alene Lake	84
Whitefish Lake	79
Swan Lake	75
Black Lake	62
Seeley Lake	55



Locations With Most Boats Inspected From ZQM

Positive Waters

Next Destination	Count
Diamond Lake	895
Bear Lake	811
Flathead Lake	746
Snake River	408
Columbia River	378
Palisades Reservoir	234
Glacier National Park	153
Clark Fork River	120
Jackson Lake	91
Lake Pend Oreille	90
Coeur dAlene Lake	84
Whitefish Lake	79
Swan Lake	75
Black Lake	62
Seeley Lake	55

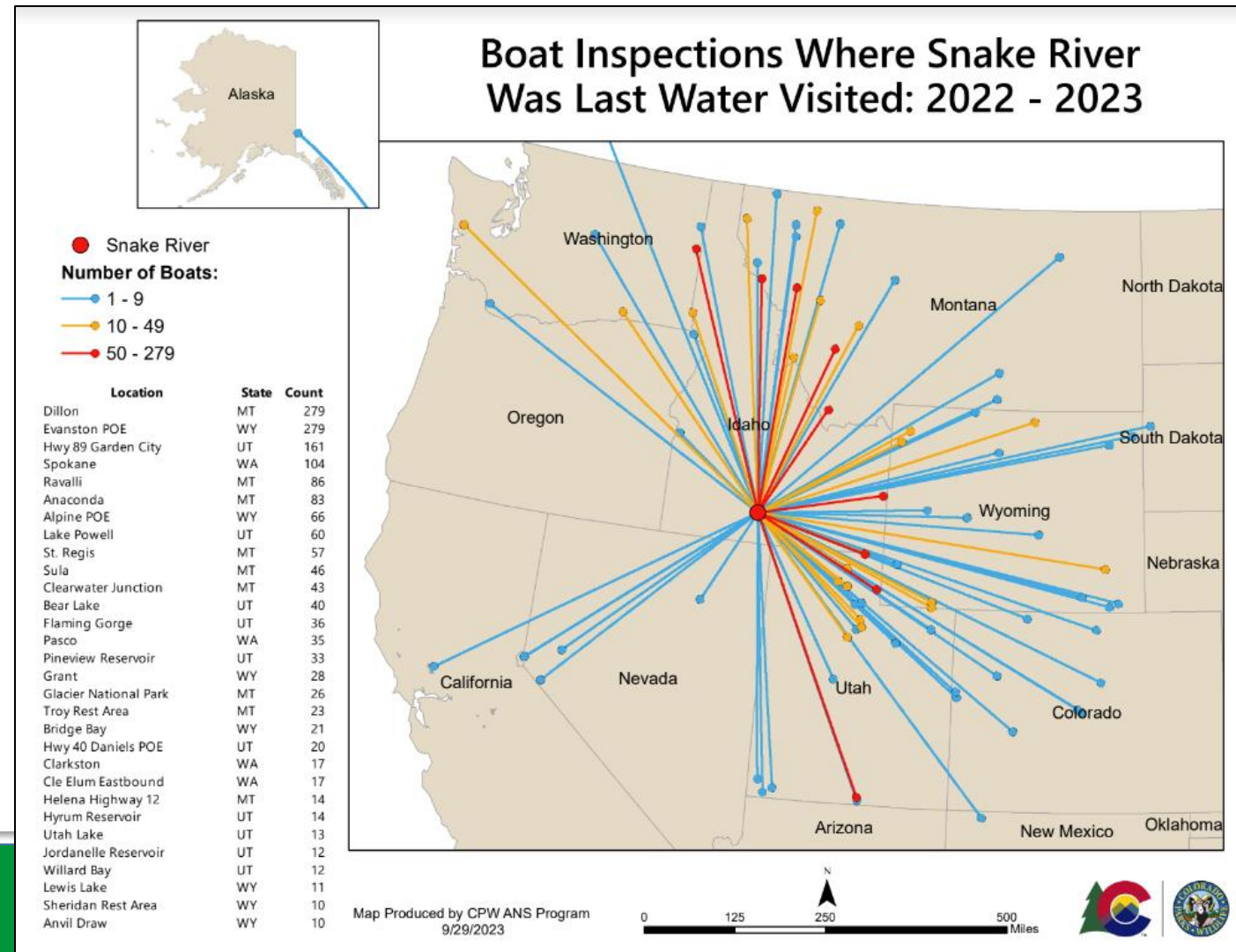


Origin	Count
Lake Powell	1,108
Mississippi River	780
Colorado River	675
Lake Havasu	578
Lake Michigan	348
Lake Superior	332
Missouri River	240
Lake Pleasant	174
Lake Erie	155
Ohio River	138
Long Lake	108
Lake Mohave	68
Canyon Lake	68
Lake Mead	56
Lake Of the Woods	48



New Infestations Change The Risk Landscape..

Next Destination	Count
Diamond Lake	895
Bear Lake	811
Flathead Lake	811
Snake River	477
Columbia River	378
Palisades Reservoir	234
Clark Fork River	186
Glacier National Park	176
Lake Pend Oreille	103
Coeur d'Alene Lake	94
Jackson Lake	91
Whitefish Lake	85
Flathead River	84
Swan Lake	81
Seeley Lake	71



Locations With Most Boats Inspected From EWM Positive Waters

Next Destination	Count
Snake River	13,806
Diamond Lake	669
Flathead Lake	342
Columbia River	260
Palisades Reservoir	202
Bear Lake	163
Glacier National Park	85
Jackson Lake	83
Salt River	81
Jenny Lake	43



Origin	Count
Snake River	13,851
Diamond Lake	474
Lake Havasu	289
Colorado River	270
Lake Michigan	261
Mississippi River	260
Lake Superior	249
Long Lake	162
Arkansas River	154
Payette River	146



Locations With Most Boats Inspected From NZMS Positive Waters

Next Destination	Count
Snake River	23,382
Bear Lake	441
Palisades Reservoir	302
Salt River	168
Columbia River	136
Flathead Lake	109
Jackson Lake	98
South Fork Snake River	72
Spirit Lake	70
Hoback River	49



Origin	Count
Snake River	23,085
Green River	688
Salmon River	361
Weber River	337
Strawberry Reservoir	261
Lake Superior	166
Flaming Gorge	156
Colorado River	135
Columbia River	116
Provo River	103



Considerations

- The output is only as good as the input.
 - Limited Dataset
 - Does not consider data from Idaho or Canadian Provinces
 - Limited data from Oregon
 - Consider ways to evaluate more inclusive and robust dataset in the future
 - Data Standards
 - Regional Data Sharing System is customizable.
 - Some states are not requiring certain data fields (Next Destination) which limits the ability to do these sorts of large scale analysis.
 - Consider some standards amongst CRB states if this sort of analysis is to be conducted in the future.
 - Specificity
 - Many “Next Destination” answers are very broad (IE “State Of”)
 - How do we better pinpoint risk in a river system? IE - “Snake River”.
 - Consider tighter naming conventions that point to specific reaches of a larger system.
- New Infestations
 - Most AIS Programs know their highest risk waters based on introduction.
 - Looking to WID Data when new infestations occur can be informative regarding waters that may not typically be high on the priority list.



Any Questions?



Thank you!

